



ZETES & AXACON
**SUPPLY CHAIN
EXPERIENCE DAY 2020**

Er du forberedt på **automatisering** af dit lager?

Af

Ulrik Gavlshøj Petersen

Adm. Direktør og medejer af

AXACON A/S



Start rigtigt

Forbliv agil

Træf jeres valg baseret på erfaring

axacon



Bestil din gratis e-bog på

www.axacon.dk/viden

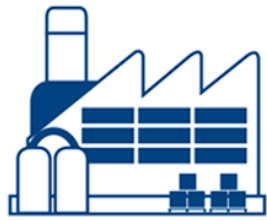
Tak for jeres opmærksomhed!



ENABLING THE
COLLABORATIVE SUPPLY CHAIN

VISIBILITY AND TRACEABILITY CHALLENGES

Visibility & Traceability



Right ID?
Parent-child?



Right goods?
Right carrier?



Right carrier?
Right vehicle?



Right stop?
Right time?
Complete order?



Right products?
Right shelf?
Right info?



Right service?
Right quality?

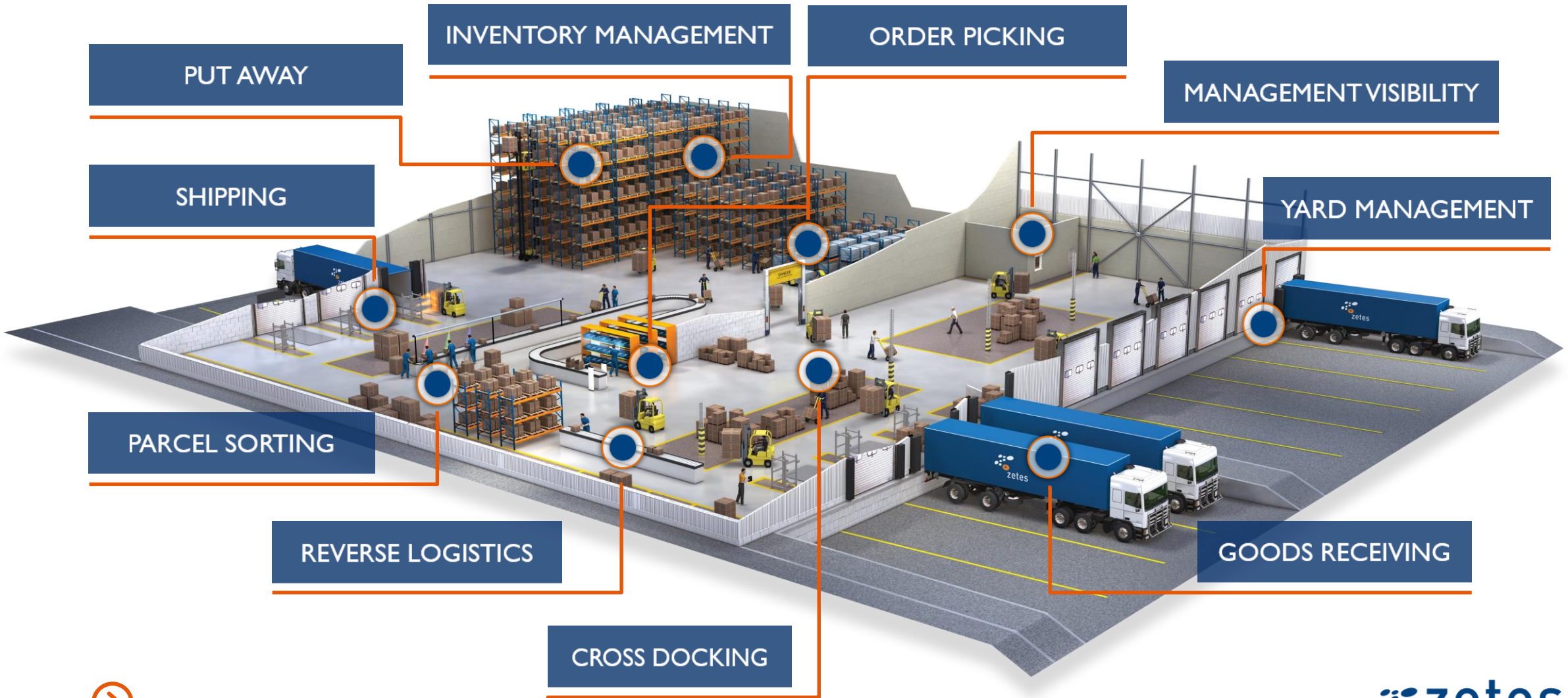
Removing IT complexity



ZETES FOR THE AGILE
WAREHOUSE

New technologies that will drastically
change supply chain management

Boost productivity, maximise visibility and gain control



Enabling technologies

GOODS RECEIVING



Multi-Modal



FLT



RFID Gates



Vision



- Circa 10% of warehouse operating costs
- Automate goods in to reduce dock congestion and receipt-to-stock dwell time
- Identify discrepancies and shortages quickly
- Manage and verify serialised items
- Capture evidence of condition to minimise supplier disputes
- Re-label goods quickly and efficiently



Enabling technologies

PUT-AWAY



Multi-Modal



HHTs



Scanners



FLT



- Circa 15% of warehouse operating costs
- Achieve efficient and accurate task instruction
- Accurately verify put-away location
- See inventory in real-time
- Achieve efficient retrieval
- Shorten receipt-to-stock cycles



Enabling technologies

ORDER PICKING



Voice



Multi-Modal



PLT



Scanners



ZetesMedea Multi-modal Voice



ZetesMedea Voice Picking



ZetesMedea Pick-to-light



ZetesMedea Put-to-light



- Circa 60% of warehouse operating costs
- Optimise pick instructions to match specific tasks in different warehouse zones
- Achieve maximum pick accuracy to facilitate same-day shipping and minimise returns
- Manage serialised product deactivation/reactivation
- Reduce training for fast ramp-up of temporary and seasonal workers

Enabling technologies

SHIPPING



Vision



RFID



FLT



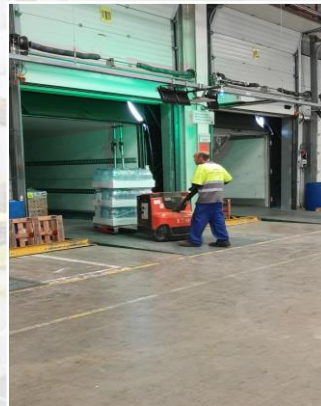
Multi-Modal



ZetesMedea
Shipping
Verification



ZetesMedea Loading Verification



- Circa 15% of warehouse operating costs
- Eradicate shipping errors
- Achieve faster, more efficient loading
- Ensure right pallet, right truck
- Enable optimum load sequencing – route and weight
- Optimise use of space to minimise empty miles



Enabling technologies

PARCEL SORTING



Projection



Conveyors



Scanners



ZetesMedea Visual Sort Assist

- Rapidly sort parcels to adhere to delivery schedules
- Deliver the right parcel to the right truck
- Reduce worker fatigue
- Ramp-up temporary workers fast and productively
- Reduce processing errors



Enabling technologies

INVENTORY MANAGEMENT



Multi-Modal



RFID



Serialisation
Aggregation



Vision



- Maintain accurate stock levels
- Reduce safety buffer stock
- Reduce errors
- Achieve regulatory compliance for serialised product traceability
- Minimise operational disruption



Enabling technologies



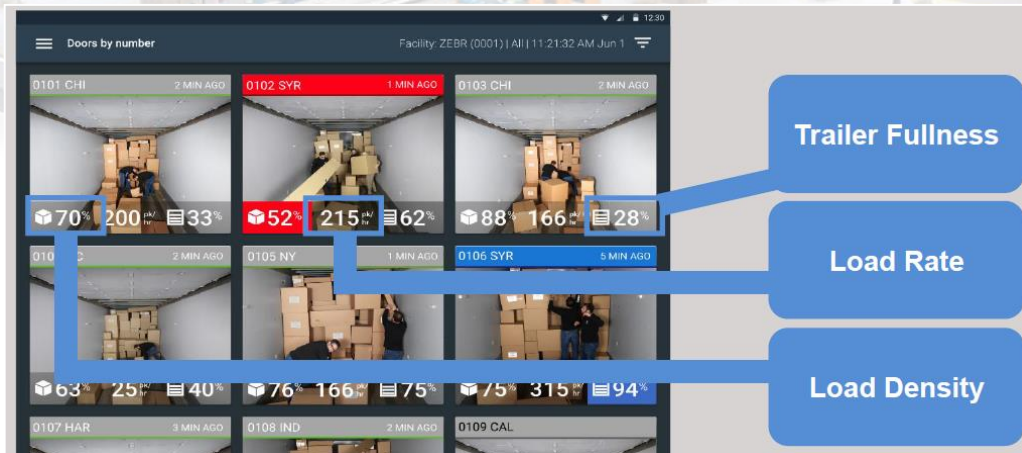
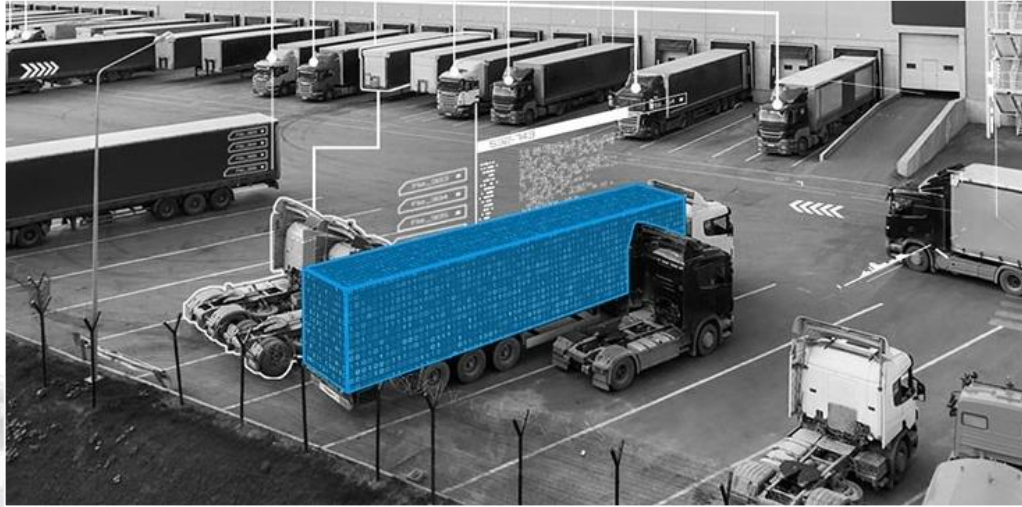
Volumetrics



Vision



Locating



Trailer Fullness

Load Rate

Load Density

YARD MANAGEMENT

- Pre-authorise and route inbound/outbound shipments for rapid receipt and turnaround
- Increase yard flow and capacity
- Optimise truck fill rates
- Reduce waiting and dwell times
- Achieve efficient goods and asset tracking





Intelligent, agile
process execution for
today and tomorrow

transportation

agility | visibility | traceability

How last mile delivery optimization can boost your
logistics and supply chain business

INCREASED INDUSTRY PRESSURE



Cost Control

- Avoid loading/delivery errors
 - Deliver right, first time
- Visibility on
 - Returnable Assets
 - Vehicles
- Optimisation of
 - Planning & admin
 - Drivers and resources
- Make better decisions and reduce risks
- Manage unplanned pick-up and deliveries

Efficiency



Risk & Compliance

- Trace every
 - Item / Action
- Proof-of-delivery
- Provide visual proof
- Proof of condition
- Meet SLA's
- Health & Safety regulations
- Sustainability
- Visibility

Traceability



Customer Expectations

- Same day, next day...
- Estimated time of arrival
- Flexibility
- Delivery status/history
- Return items
- Added value services
- Status visibility
- Charge on delivery
- Communicate ETA's and incidents to customers instantly

Service

End-to-end delivery efficiency and visibility



Extends systems to the operational field



Using mobile devices, drivers are guided through every step of process execution



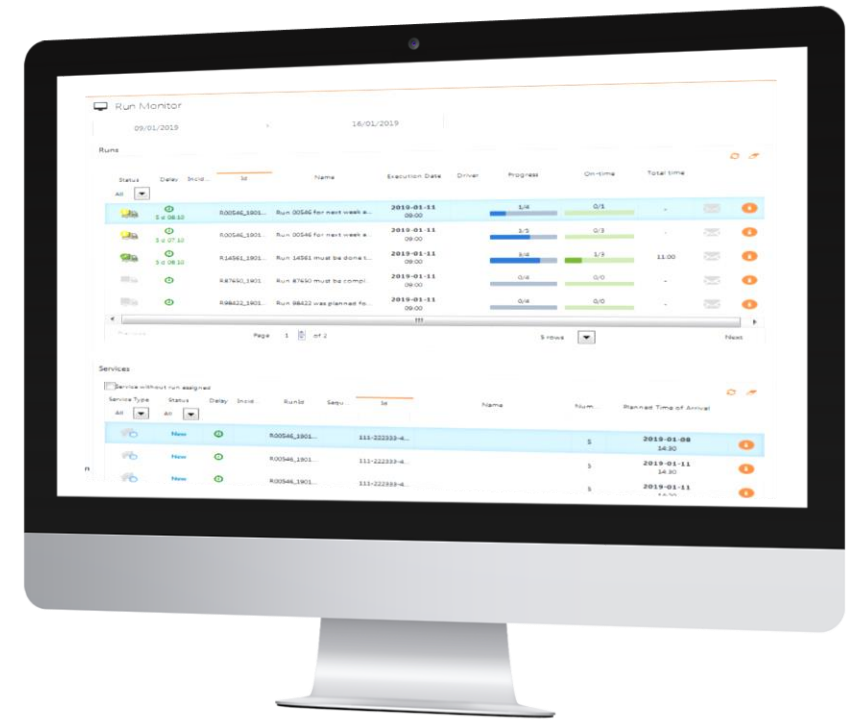
All events are registered during pick-up and delivery process



Data is communicated in real-time



Track & Trace and reporting modules provide alerts and insights for customers and management



A New Generation
Proof of Delivery Mobility
Solution

Management / Back-Office

- Easy driver, vehicle and asset set-up
- Simplify sub-contractor onboarding
- Track returnable assets
- Dynamically assign services to a run
- Job data and incident management visibility



Enroute Management

- Dynamically update services, incidents and transfers enroute
- Optimise runs with GPS guided turn-by-turn navigation
- Real-time job status and driver location visibility
- Monitor actual vs planned run status visibility



Direct Store Delivery / Van Sales / Bulk Delivery

- Capture sales in the field through powerful product cataloguing
- Enable promotions, stock replenishment, store merchandising
- Manage stock throughout the delivery and collection process



Loading / Unloading

- Fast, accurate loading verification for efficient run sequencing
- Optimise loading sequencing and space utilisation



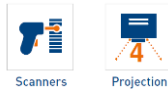
Compliance

- Meet regulatory requirements for track and trace
- Monitor condition or temperature of sensitive goods
- Maintain duty of care for drivers and vehicles



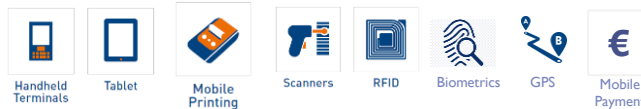
Parcel Sorting

- Rapidly sort parcels to maximise delivery schedules
- Easily ramp-up labour during seasonal peaks
- Reduce worker fatigue and processing errors



Delivery / Collection

- Intuitive step-by-step delivery process guidance and KPI adherence
- Proactively update customers on status
- Capture time-stamped job data, consignee identity
- Enable mobile payment and invoice printing



Unattended Delivery

- Securely deliver/collect from non-attended locations with time-stamped proof of presence for undisputable evidence





ADDITIONAL SERVICES



Geolocation
Geolocation of addresses



Route Sequencing
Optimize runs



ETA Calculation



Geofencing
Definition of geofencing Zones
Alert Generation



Alert Engine
Alerts to Management, Driver and Customer
E-mail, SMS, Notifications, CRM integration



e-CMR



Reporting



Digital representation of the supply chain, constructed in a virtual environment that allows for ongoing examination, validation, and projection of future states.

ENGINEERING
TOMORROW

Danfoss

DANFOSS GLOBAL SERVICES

2020-03-05 Supply Chain Experience Day 2020



Central European Distribution Center

Build year 2001 / 18.000 m²

- Open 260 days/year - 24 hours a day
- Approximately 250 employees
 - 70 white collar

Site area

- Site area 120.000 m²

Building

- Warehouse 16.700 m²
 - Narrow Aisle Storage (5.200 m² – 14.000 locations)
 - MiniLoad (2.600 m² – 70.000/103.000 locations)
 - Technical installations & maintenance (900 m²)
 - Pick- and pack area (2.400 m²)
 - In- and outbound terminal (5.600 m²)
- Administration building (1.200 m²)

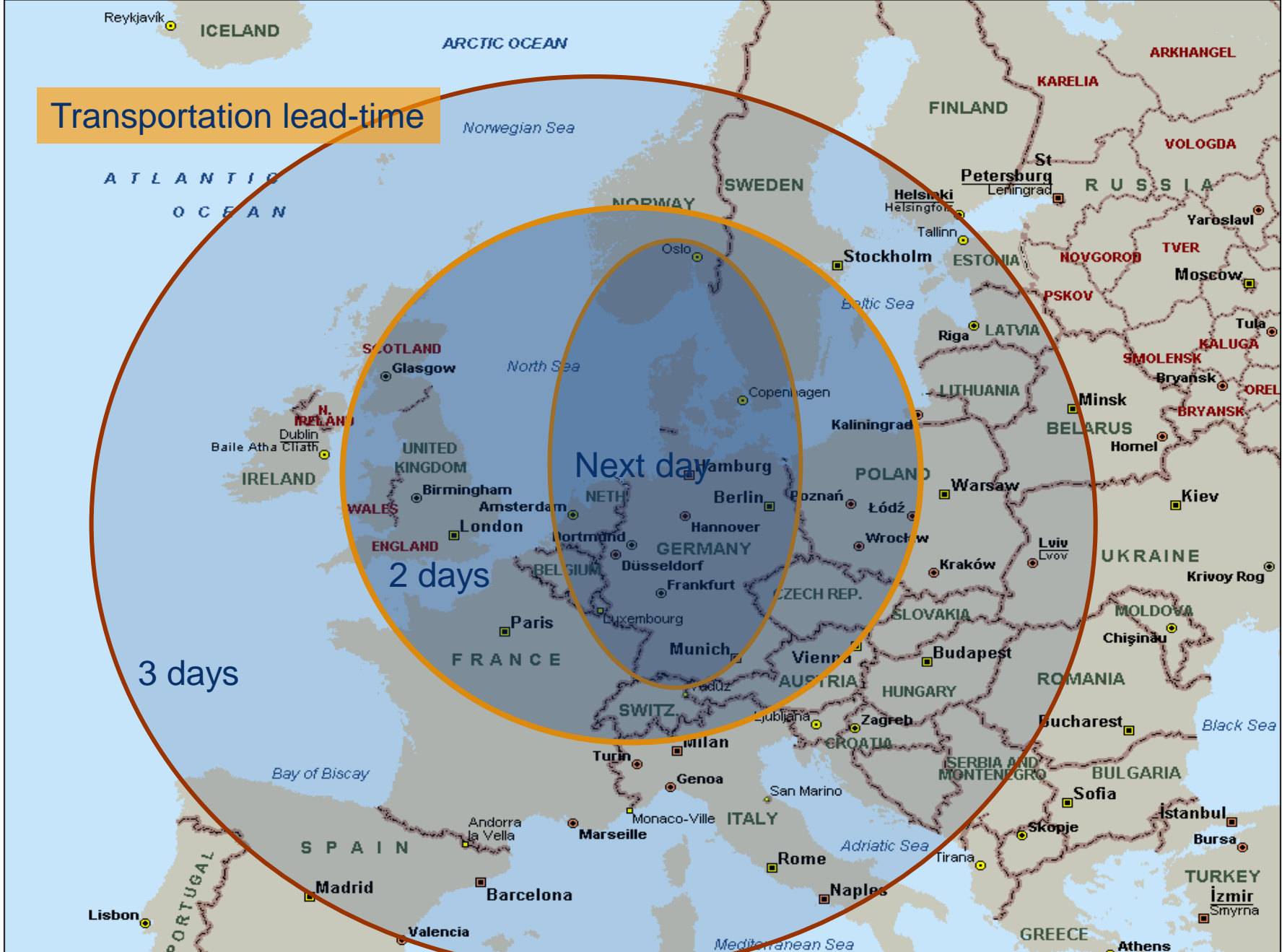


DAILY VOLUME HANDLED VIA CDC



Daily outbound volume
3.000 deliveries ~ 7.500 order lines
1.500 pallets and 3.500 cartons
350 shipments ~ 190 tons
60-70 trucks/containers

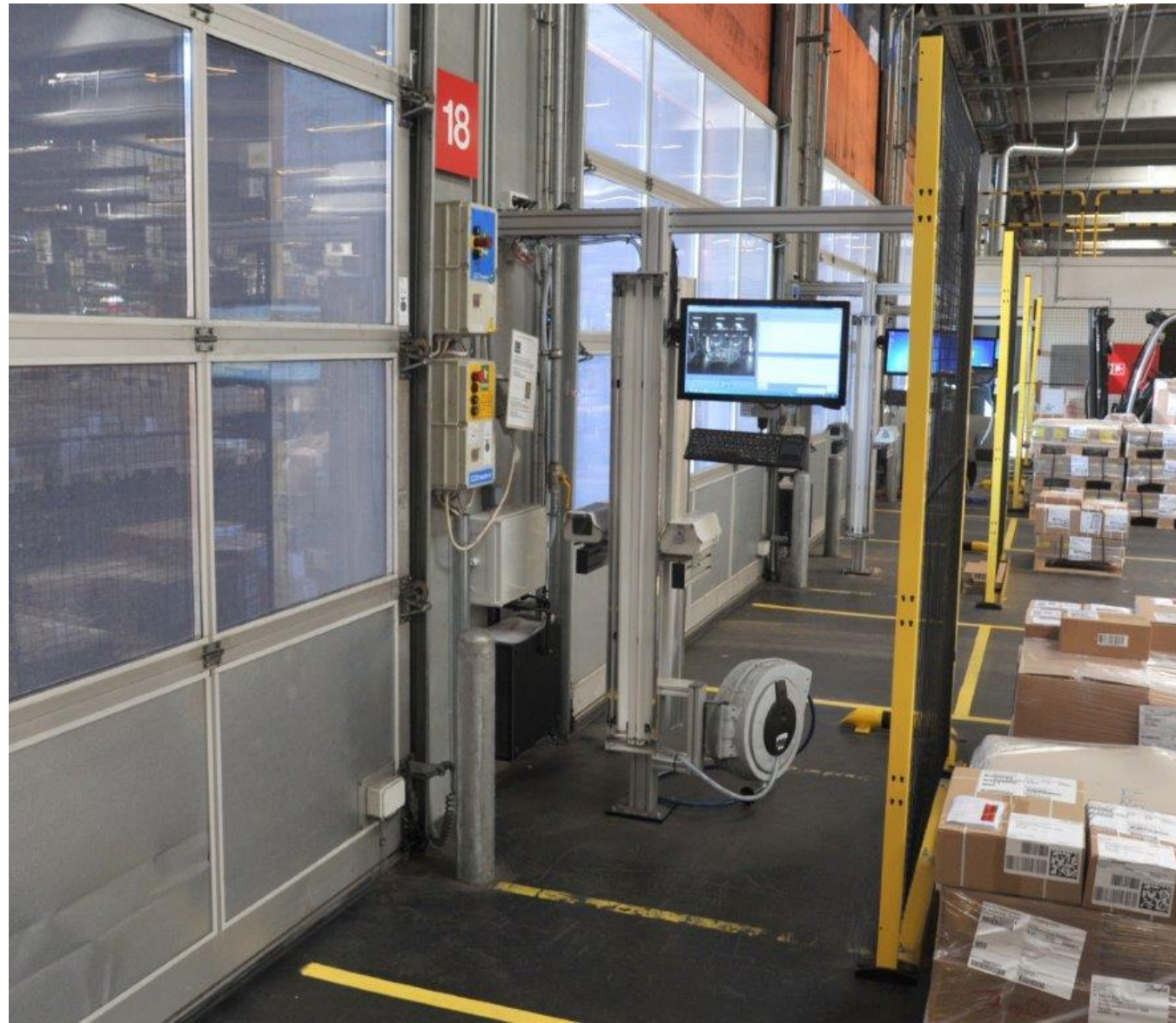
Transportation lead-time



Choose the right solution.

- Options
 - Scanner solution
 - RFID Solution
 - Camera Solution
- Danfoss choose Zetes ImageID Solution with Cameras
 - Low implementation cost
 - Standard solution
 - Pictures
 - Easy to find error's
 - Easy to implement to other Danfoss sites.





Savings and benefits

Before	ImageID implemented
<ul style="list-style-type: none">• 500 loading errors per year• Customer Complaints<ul style="list-style-type: none">• 5-6 people involved• Slow process• Truck driver need signing many documents• Manuel arciving of shipping documents	<ul style="list-style-type: none">• 0 loading errors by using ImageID• Picture of loaded Goods• Posible to traces• Customer Complaints<ul style="list-style-type: none">• 1 person handling• Fast and easy• Digital signatur by Truck Driver• Less print/paper• Digital arciving of shipping documents• Picture of loaded goods• ROI 1 year



Done by Deer - AXACON

done
bydeer™
Danish Design



Vigtigt for Done by Deer's succesfulde implementering

- Vi lavede en grundig analyse af hvad vi forventer af WMS
- Vi undersøgte hvordan vi kunne effektiviserer vores tidlige rutiner for at få maksimalt ud af de muligheder der er i WMS
- Vi brugte meget tid på integrationen, den er en meget vigtig for de effektiviseringer vi har opnået.
- Klar definition af de tilpasninger der skulle til for at vi kunne få maksimalt ud af WMS
- TEST under udviklingen af de rettelser som vi ønskede i WMS
- Grundig oplæring af personalet
- Godt forberedt før opstart.
- Realistiske forventninger til WMS systemet, fra opstart til fuld drift.
- Vær forberedt på at alt ikke er 100% ved opstart, vær forberedt på rettelser efterfølgende.
- Løbende fokus på udvikling for at få maksimalt ud af de muligheder der er i WMS.



R.O.I

Den beregnede ROI blev budgetteret til at være under 2 år. – Dette budget holder!

Efterfølgende er der planlagt nye optimeringer hvor der er kortere ROI.

Målsætninger at få lageromsætningshastigheden op til 3-4 for at reducerer kapitalbindingen.

WMS har gjort det muligt for Done by Deer at implementere toldlager hvilket der vil give virksomheden endnu større effektiviseringer og besparelser.

WMS har gjort det muligt for Done by Deer at effektiviserer leveringstider med op til 10 dage, fra planlagt modtagelse af varer til ordre er færdig behandlet.

We offer **BEST-IN-CLASS**
personal freight forwarding and
logistics solutions
ACROSS THE WORLD

CASE BESKRIVELSER



KOMPLEKSITETS REDUKTION

Færre aktører er rigide.
Mange aktører er fleksible.

Hvad giver størst afkast?

BESLUTNINGS MODELLER

Beslutningsmodeller giver
overblik og fakta baseret
handling.

**Vil beslutningsstøtte
resultere i bedre afkast?**

MATEMATISK MODELLERING

Matematisk modellering regner
optimum af kombinations-
muligheder, som mennesket
ikke kan overskue.

**Vil matematisk modellering
resultere i bedre afkast?**

KONSOLIDERING FORSENDELSER

Konsolidering giver både miljø
og afkastet, såfremt den rette
S&OP taktik understøtter en
skematisk leverance.

**Vil konsolideringer
resultere i bedre afkast?**

DIGITALE LØSNINGER



MyFREJA er vores BI kundeplatform, hvor kundens data er bearbejdet i let forståelige visuelle effekter

MyFREJA er cloud baseret og afbilledes via Microsoft Power BI

MyFREJA muliggør analytisk gennemsigtighed indenfor:

- Dashboard med transport statistik og KPIs
- **Month/Month analysis**
- **Year/Year analysis**
- **Cost of transport**
- **Supplier – Cost to serve**
- **Customer – Cost to serve**
- **Heat Map – Country level**
- Heat Map – Zip code level
- Pin points – Suppliers
- Pin points – Customers
- Volumen overblik I enhederne: Units, LDM, M3, Tons
- Shared files
- Fordeling af forsendelser på hverdage
- Histogram af forsendelses størrelse / frekvens
- Cost analysis

