

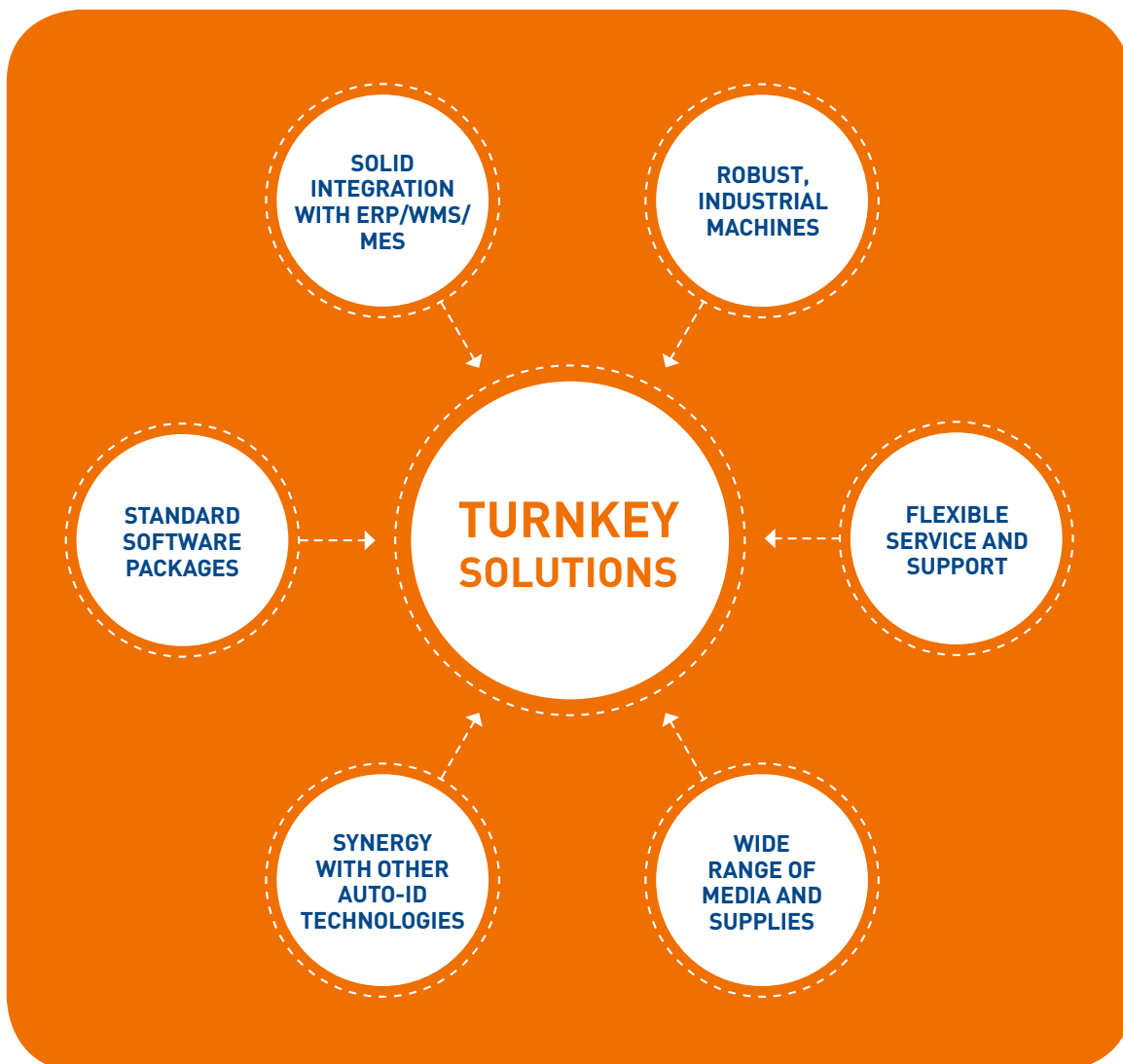


**Your products  
always  
efficiently  
labelled?**

**INTEGRATED LABELLING SOLUTIONS**  
**PRINT & APPLY | LABELLING | SUPPLIES | SERVICE**



# Efficient



# PRODUCT IDENTIFICATION IN DEMANDING PRODUCTION LINE ENVIRONMENTS

- Turnkey solutions
- Standard and customised
- A-Z service & support

## Over 25 Years of Identification Expertise at Your Service

Zetes has more than 25 years of experience in the design, development, implementation and support of solutions for the automatic identification of goods. Our print & apply and labelling solutions have been integrated into production lines in a wide range of industries across Europe.

Standardised if possible but highly customised if required, at all times our solutions are designed in line with your specific requirements. For this, you can rely on our vast network of local specialists, an international Competence Centre and production sites in the North (Belgium) and South (Spain) of Europe.

From the analysis of your needs, across the design of the machines to the delivery of flexible service and support, we are there to make sure you get the solution certain to offer the highest benefit.

## Turnkey Solutions from a One Stop Shop

Zetes offers more than just machines, we offer total solutions! To guarantee that these turnkey solutions integrate perfectly into your production line, we select only the best-fit elements:

- **INDUSTRIAL MACHINES** built by our own specialists, based on standard building blocks but adaptable to your requirements. All machines use standard industry components (Festo, Sick, Siemens, Zebra, Datamax, Intermec, Sato, etc. ).
- **SOLID INTEGRATION WITH THE ERP, WMS OR MES** to ensure secure data communications. Our solutions are SAP-certified and integrate with all SAP modules.
- **STANDARD, RELIABLE SOFTWARE PACKAGES** that guarantee seamless integration into your production line and facilitate essential label design.
- **OPTIMAL CONTROL** via integration with proven and innovative Auto-ID technologies, such as fixed scanners, RFID, vision technology.
- **FLEXIBLE SERVICE AND SUPPORT PACKAGES** tailored to suit your needs, both at local or international level.
- A wide range of **MEDIA & SUPPLIES**, including labels, tags, ribbons, etc.

# PRINT & APPLY

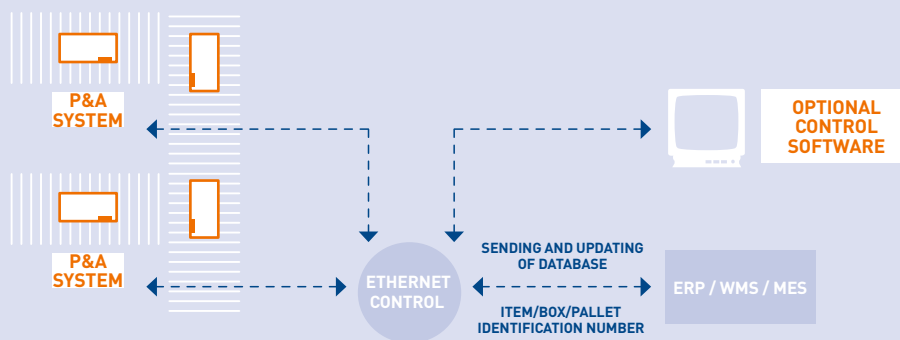
Whether you operate in manufacturing, transport & logistics or distribution, the accurate identification of your goods is key to improve traceability throughout your supply chain. Our print & apply solutions efficiently identify items, boxes and pallets with labels that are printed and applied in real-time. Thanks to a solid integration with the WMS, MES or ERP system and the production line, these solutions are your safe choice in demanding and high-volume environments.

## A FLEXIBLE APPROACH

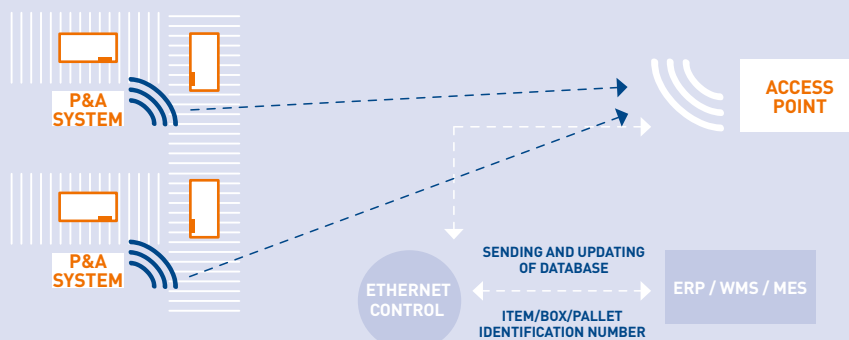
- Standard and custom built systems
- Various applications: top / bottom / front / rear / side / combined
- Various applicator modules: Touch & Go (patented technology) / Vacuum & Blow / Vacuum & Blow & Roller / Airjet / ...
- Print engine modules of all leading manufacturers: Zebra / Intermec / Datamax / Sato / ...
- Integration with other Auto-ID technologies ensuring optimal control (scanning / vision technology / RFID)
- Integration with all ERP/MES/WMS

**SAP® Certified**  
Integration with SAP Applications

## ETHERNET COMMUNICATION



## RADIO FREQUENCY COMMUNICATION



## ITEMS



## BOXES & BAGS



## PALLETS

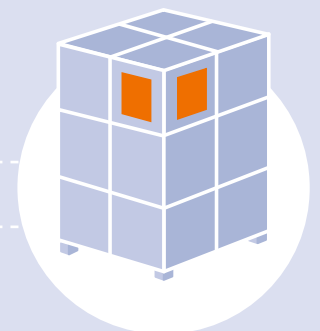
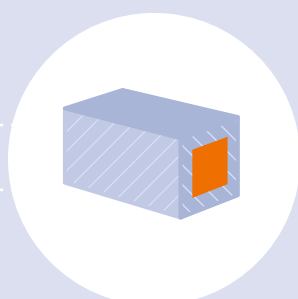


WE LABEL  
ANY PRODUCT  
WITH ANY LABEL  
ON ANY SIDE



# LABELLING

The visibility of your products in any retail outlet to a large extent depends on its packaging. Zetes' automated and semi-automated labelling solutions securely identify your products using the pre-printed, self-adhesive labels of your choice. Perfectly integrated with your production line, our labelling solutions quickly and accurately label products of any type and size, at any speed of the conveyor. Whether you need a basic solution or a complete installation that includes various product treatment steps (such as aligning and dividing), our flexible modules can be adapted to your needs.

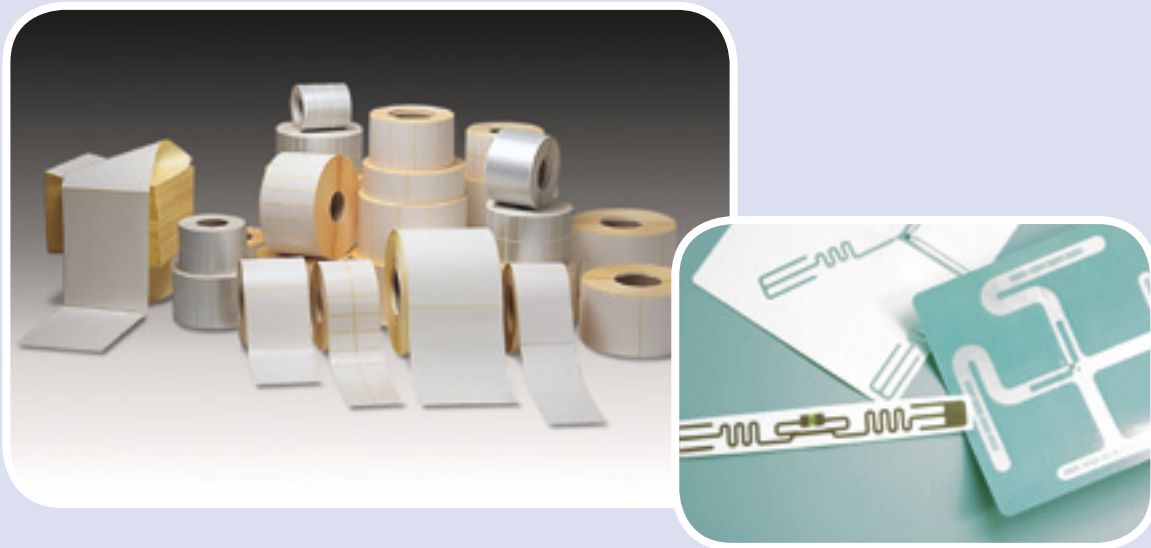




# MEDIA, SUPPLIES & SERVICE

## MEDIA & SUPPLIES

Selecting the right label, tag and ribbon (thermal transfer) is important to ensure optimal performance of your labelling solution. Zetes is there to assist you in choosing the most appropriate media according to the requirements of your specific environment. From standard blank labels to full-colour specials or RFID tags, we offer the quantity you need at competitive prices. For this, we rely on our own label range and on close partnerships with the leading industry manufacturers.



## MAINTENANCE & SUPPORT

Ensure maximum availability via service and support plans that are tailored to your needs and cover both software and hardware. If an incident occurs, our technical support teams are ready to intervene across Europe, using spare parts available from our buffer stock workshops. Working back-to-back with our hardware partners, defective equipment is dispatched to their own repair centres as and when required.



## **ZETES GROUP HQ**

Da Vinci Science Park  
Rue de Strasbourg 3  
1130 Brussels  
Belgium  
T: + 32 (0)2 728 37 11  
F: + 32 (0)2 728 37 19  
[www.zetes.com](http://www.zetes.com)

**[WWW.ZETES.COM](http://WWW.ZETES.COM) | ALWAYS A GOOD ID**

BELGIUM | CÔTE D'IVOIRE | FRANCE | GERMANY | IRELAND | ISRAEL | ITALY | NORDIC COUNTRIES | PORTUGAL | SPAIN | SWITZERLAND | THE NETHERLANDS | UNITED KINGDOM